

EON

— EYE OF NOIDA —



FOR THOSE WHO
CAN SEE HOW
THE FUTURE
WILL UNFOLD.





FAIRFOX

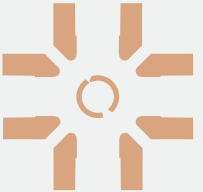




The future is full of opportunities, and it belongs to those who can see it today. Those who can see what will be rather than what is now.

The life we always aspired for, the life we have always wanted to live is not far. It's right in the Eye of Noida.

Presenting

E  **N**
— EYE OF NOIDA —

All specifications, designs, layout, images, conditions are only indicative and some of these can be changed at the discretion of the builder/architect/authority. These are purely conceptual and constitute no legal offerings. 1sqm= 10.764 sq. ft.



ARTISTIC IMPRESSION



MULTIPLE POSSIBILITIES WITH ONE ADDRESS

Welcome to EON, a perfect combination of retail and IT/ITES office spaces that matches the best in the world. It's an innovative lifestyle destination with one-of-a-kind multi-sensory experiences shaped by inspirational architecture and world-renowned retailers.

- IT/ITES-enabled services park spread across 13.65 acres
- 4 phase development program comprising of:
 - High-end retail
 - Elegant IT/ITES office spaces
- Grade 'A' Building
- IGBC gold certification compliant development
- Green building



FAIRFOX



ARTISTIC IMPRESSION

E-N1



DESIGN PHILOSOPHY

All specifications, designs, layout, images, conditions are only indicative and some of these can be changed at the discretion of the builder/architect/authority.
These are purely conceptual and constitute no legal offerings. 1sqm= 10.764 sq. ft.



FAIRFOX

CIRCULATION

All vehicular circulation is designed for optimal safety and minimal collisions between pedestrian and vehicular movement.

The whole complex is connected on the surface as well as an elevated network of skywalks to enable cross-development barrier-free transit of shoppers, and office goers alike.

From the parking floor to the surface, there is an open green plaza with a sculptural staircase. Green-plaza drop-off for shoppers and office goers.



PLAZAS

Four periphery plazas with educated drop-off and outdoor, multi-use paved and semi-green zones are designated to separate stages.

One central, 42-meter-wide green avenue, runs across the entire development lined by a variety of cuisines.



ARTISTIC IMPRESSION



ARTISTIC IMPRESSION

ENVIRONMENTALLY CONSCIOUS

Buildings at EON are highly green due to energy efficiency parameters such as: rainwater harvesting, energy generation through renewable means with green rating.

E_NN

— EYE OF NOIDA —



IBM TECHNOLOGIES

G.T. LINK ROAD

TECHZONE-4, GREATER NOIDA WEST

KISSAN CHOWK

ELECTRONIC CITY

FORTIS HOSPITAL

OIL INDUSTRY DEVELOPMENT BOARD

ALIBABA SECTOR - 2

HINDON RIVER

TOWARDS GREATER NOIDA WEST

SECTOR 51

SECTOR 52

NSEZ

SECTOR 81

E_NN

EXL
SAPIENT
GLOBAL LOGIC

BOTANICAL GARDEN

SECTOR 18

FILM CITY

AMITY INTERNATIONAL SCHOOL SEC. 44

UGCC GOLF COURSE

ATS VILLAGE SECTOR 93A

ELDECO UTOPIA

137 142

SEZ

SEZ

NOIDA EXPRESSWAY

SEZ

SEZ

SEC. 135
MET LIFE
IBM

SEC. 129

AMITY UNIVERSITY

AON HEWITT
ADOBE SYSTEMS

JAYPEE HOSPITAL

OKHLA BIRD CENTURY

KALINDI KUNJ
MAHAMAYA FLYOVER

YAMUNA RIVER

DND

NH 24

NOIDA EXPRESSWAY

FNG

A PROMINENT LOCATION

EON is located in the bustling sector 140-A Noida, with its unique dimensions and dynamic facade, this one-of-a-kind architectural landmark will stimulate the spirit of Noida. This mixed-use complex is a triumph of creativity and craftsmanship, featuring an office tower and high-street retail zone along with a supercharged fashion and culinary experience.

The location is easily accessible:

- Walking distance from metro Station/FNG/Noida Expressway
- 20 Minutes' drive to Jewar International Airport
- 15 Minutes' drive to DND Flyway
- 2-5 Minutes' drive to nearest Hospital (Felix/Jaypee Hospital)





FAIRFOX



ARTISTIC IMPRESSION



A WORLD OF GREAT EXPERIENCE

Retail

The retail zone is an ideal setting for a wide variety of brands, from premium to the trendy, to the niche, spread across different floors. It is destined to evolve into a must-visit haven for Delhi/NCR visitors across the country thanks to its easy access and seamless connectivity.

IT/ITES Office Spaces

EON will be the new headquarters for myriad international corporate brands. Green building certification will bolster its value and appeal.



FAIRFOX



ARTISTIC IMPRESSION



SPACE FOR HIGH-END RETAIL

Imagine a retail space where everything is unique, where you can discover and experience tomorrow's trends. As a retailer, you can showcase your brand over different floors. There is easy access to the retail area with pedestrian plazas leading to smaller streets and interactive spaces. For innovative businesses, upcoming retailers, and many more as with EON, you get an ideal retail space.



FAIRFOX

ARTISTIC IMPRESSION



TOWER A

E*Y*E
— EYE OF NOIDA —

All specifications, designs, layout, images, conditions are only indicative and some of these can be changed at the discretion of the builder/architect/authority. These are purely conceptual and constitute no legal offerings.
1sqm= 10.764 sq. ft.



MORE THAN JUST A PLACE TO WORK

The EON office space was designed with a clear objective in mind: to create a distinctive, energetic environment that everyone who works there might enjoy. Here is a development that places sociability and networking at its very heart. One that encourages interaction and exchange between companies through shared spaces.

All specifications, designs, layout, images, conditions are only indicative and some of these can be changed at the discretion of the builder/architect/authority. These are purely conceptual and constitute no legal offerings. 1sqm= 10.764 sq. ft.



FAIRFOX





THE ULTIMATE DINING EXPERIENCE.

A dining floor combines the finest of local and international themes with lively culinary events. A carefully chosen selection of restaurants, gourmet food courts, and concept dining will cater to the tastes and preferences of a discerning audience.



ARTISTIC IMPRESSION



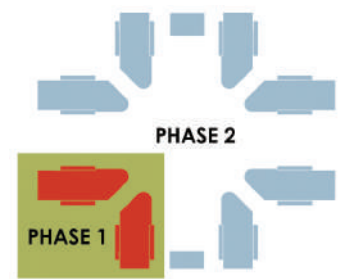
E:|N4

All specifications, designs, layout, images, conditions are only indicative and some of these can be changed at the discretion of the builder/architect/authority. These are purely conceptual and constitute no legal offerings. 1sqm= 10.764 sq. ft.



LEGEND

1. Vehicular Entrance
2. Vehicular Exit
3. Road to Ramp
4. Road to Shopping Plaza
5. Shaded Avenue
6. Green Boulevard
7. Central Inner Grove with Mound
8. Shopping Boulevard
9. Pedestrian Shopping Plaza
10. F&B Kiosk
11. Double height Entrance lobby (30 ft)
12. Project Signage
13. Food Terraces
14. Pedestrian Crossovers 15. Sky walk
16. Multifunctional spaces
17. Kid's Play Area
18. Sand Pit
19. Amphitheater
20. Performance Deck
21. Landscape Terraces
22. Tree Bosque Seating
23. Vehicular Boulevard
24. Pedestrian Boulevard
25. Pedestrian Entry
26. Sculptural staircase-basement connection



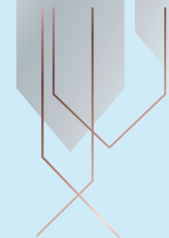
The background is a dark grey color. On the left side, there is a large white triangle pointing towards the center, outlined with a thin copper-colored line. Two other copper-colored lines cross each other in the upper left quadrant. In the lower right quadrant, there are several overlapping copper-colored outlines of geometric shapes, including a tall vertical rectangle, a smaller house-like shape, and a larger house-like shape, all partially overlapping each other.

SITEMAP



FAIRFOX



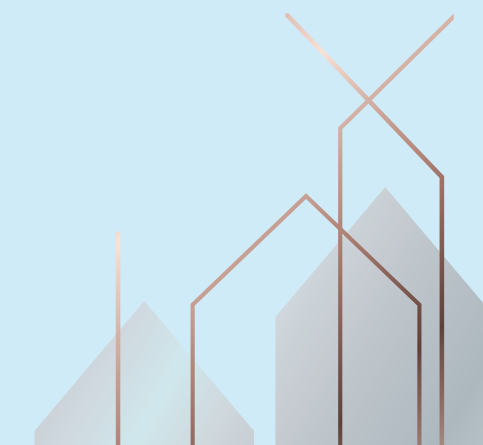


ARCHITECTS WITH A GLOBAL REPUTATION AND A SLEW OF AWARDS.

EON's remarkable and iconic complex is destined to evolve into a must-visit haven for Delhi/NCR residents. It has been designed by the prestigious **Design Forum International**, whose portfolio includes some of the world's most spectacular architecture.

- Gulf Adiba, Gurugram
- IRCON Office, Gurugram
- Select City Walk, Delhi

EON will be noted for its imposing architecture thanks to the expertise of the superb architects.





INTEGRAL DESIGNS


Integral Designs are landscape architects to a range from private homeowners, government agencies to real estate companies. They have worked with prominent Indian and International architecture firms. Their projects span across globe, from small towns to big metropolitan including the Mall of India, Noida, Worldmark, Aerocity & Marriott, Dominica in the past 6 years.



AXIS FACADES

Axis Facades are an international facade consultant with offices in the US, Asia, Middle East, and Europe have worked on more than 450+ projects in India. Axis Facades is currently having 200+ structures underway in three continents spanning across hotel, commercial, office building, retail, aviation, residential etc. Some of their projects are Allianz Tower, Europe, Lemeridin Hotel, East Asia & First International Financial Centre, East Asia.

During the years they have researched different indigenous materials and have developed a material library to enable architects and clients to understand the different systems and viable options in India and abroad.





FAIRFOX



FAIRFOX IT INFRA PRIVATE LIMITED

A premier real estate development company whose philosophy is based on client satisfaction, execution excellence, and on-time delivery. The company is committed to growing and expanding its horizons by addressing customer needs based upon trust, transparency, and efficiency. With high levels of innovation, product quality, and customer satisfaction, the company aspires to further strengthen the brand. Our professionally managed team enables us to provide complete real estate solutions under one roof including commercial & residential properties to our clients spread across the globe.



Phone No.: 0120 4196 872

Email: info@fairfoxitinfra.com | Web- www.fairfoxitinfra.com

Site/Corporate Address: Plot No 01A, Sector 140 A, Noida, Uttar Pradesh - 201305

RERA No.:

Disclaimer:

The images, appearances, colours, etc. given herein are mere artistic impression for representation purposes only and do not constitute an offer, an invitation to offer and/or commitment of any nature between the promoter and the recipient. The data/information herein is intended to give a general understanding of the subject matter and is subject to change without any prior notice. Readers are therefore requested to verify all details, including area, amenities, services, terms of sale and payment schedule and other relevant terms independently with the promoter prior to arriving at any decision of buying any plot in the said project. The binding offering shall be governed by the terms and conditions of the Agreement for Sale only. In no event will the Promoter be liable for any claim made by the reader including seeking any cancellation and/or withdrawal for any of the inaccuracies in the information provided in the advertisement, though all the efforts have been made to ensure accuracy. We also do not hold any responsibility for any information provided by any broker/channel partner/property dealer or made available on any website/email communication other than official website/email/correspondence. (1 sq.mt. = 10.764 sq. ft, 1 sq. mt. = 1.196 sq. yd).